

Paulo Bernardino

composição

António Arnaut

textos

Joana Costa

ilustrações

Cantata de Natal
O pássaro azul



Cantata de Natal

O PÁSSARO AZUL

1 - Primeiro Poema de Natal

António Arnaut (1936-2018)

Paulo Bernardino (n. 1973)

Lento

pp

7

p 3 mf 4

14

7

2 - Fogueira Apagada

Larghetto

TACET

3 - Uma Vez

Andante (♩ = 80)

20

21

9

poco rall. . .

31 A tempo

12

45

17

62 62

14

77

41

121

121

19

140

7

147 s. *f*

e de - pois des - ceu sua - ve - men - te no ca - se - - bre on - de o ver - bo se cum -

155 *ff* 6 3

164 Allarg. 167 Adagio (♩ = 69) 8

177 177 Tempo primo 7

188 Meno mosso (tempo libero senza rigore) 198 Tempo primo 29

4 - Nesta Noite

TIMPANI [high-pitch] with brushes
Revoluto (♩ = 58) *f*

9 2 2 2 2

17 (17) 2 3 4 2 *p cresc.* *f*

26 2 3 4 *p sub. cresc.* *f*

33

SUSPENDED CYMBAL
with brushes

TIMPANI [low-pitch]

42 (42)

f

50

58 (58)

66

meno f

74 (74)

f

82

più f

90 (90)

98

Tímpanos & Prato Suspenso

106

103

mf *ligeiro*

113

123

130

138

138

148

157

166

166

f

172

180 **182**

189

196

202 *rall.*

5 - A Oriente

Contemplativo (♩ = 71)

28 **29** **33**

63 **26** **89** **12** **101** **18**

119 **12** **131** **5**

139 **2** **2**

146 **5**

154

f *cresc. poco a poco*

159

ff

6 - Música Suave

Melancólico (♩ = 71)

24 (25) 21

47 (47) 39

(87) 87 Com leveza (♩ = 100) 50 (137) 44 s.

é ou - vir o co - ra - ção.

186 allarg. 187 a tempo

mf cresc. *f*

195 7

210

219 8

233

Musical staff in bass clef, 3/4 time. It contains several measures of music, including a half note, a quarter note, and a series of eighth notes with accents (>). The staff ends with a fermata over a half note.

7 - Escrevo Natal

Lacrimoso (♩ = 69)

Musical staff in bass clef, 3/4 time. It shows measure numbers 24, 25 (circled), and 16. The staff is mostly empty, with a double bar line between measures 24 and 25, and another between 25 and 16.

Musical staff in bass clef, 3/4 time. It shows measure numbers 41(41) and 7. The staff is mostly empty, with a double bar line between measures 41 and 7.

Musical staff in bass clef, 3/4 time. It shows measure numbers 48, 57 (circled), and 7. The staff is mostly empty, with double bar lines between measures 48 and 57, and between 57 and 7.

Musical staff in bass clef, 3/4 time. It shows measure numbers 64, 73 (circled), and 13. The staff is mostly empty, with double bar lines between measures 64 and 73, and between 73 and 13. The staff ends with a measure containing a triplet of eighth notes marked 'Trp.' and a sharp sign.

Musical staff in bass clef, 3/4 time. It shows measure number 88(88). The staff contains a triplet of eighth notes, followed by several measures of quarter notes with rests. Dynamics include *f cresc.* and *ff*.

Musical staff in bass clef, 3/4 time. It shows measure number 96. The staff contains several measures of quarter notes with rests. Dynamics include *pp sub <*.

Musical staff in bass clef, 3/4 time. It shows measure number 105(105). The tempo marking is *Meno mosso*. The staff contains a series of notes with accents (>) and slurs.

Musical staff in bass clef, 3/4 time. It shows measure number 117. The staff contains a series of notes with accents (>) and slurs, ending with a fermata over a half note.

8 - Dezembro

Solene (♩ = 48)

pp

12 (13)

pp ff pp ff pp

23 pp subito

f ff

34 (34)

mf ff ff

42 (42)

p ff p ff p

53 (55)

ff mf ff mf ff mf

63 (66)

f mf subito ff

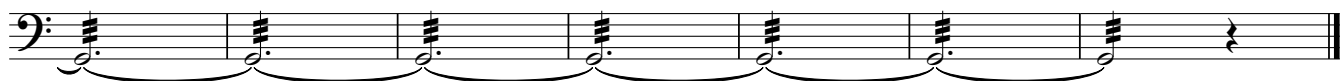
74

mf ff

82 (83)

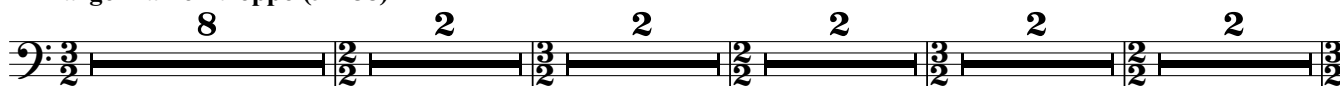
pp

88



9 - A Palavra

Largo ma non troppo (♩ = 58)



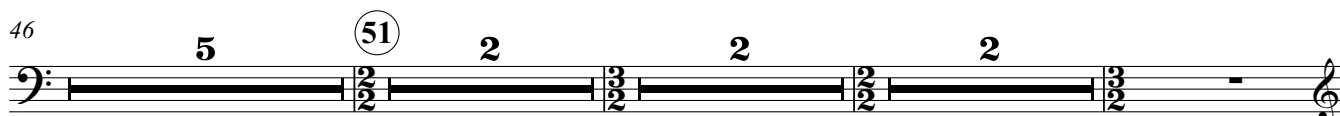
19



36



46

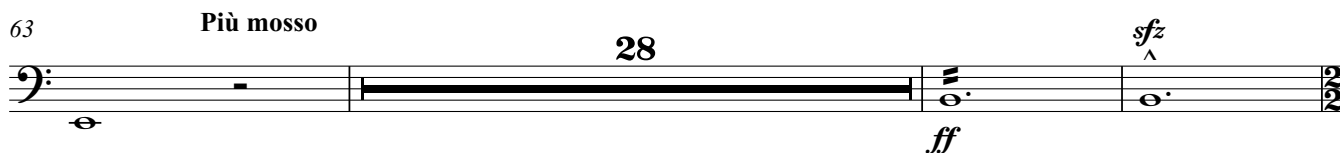


58



63

Più mosso

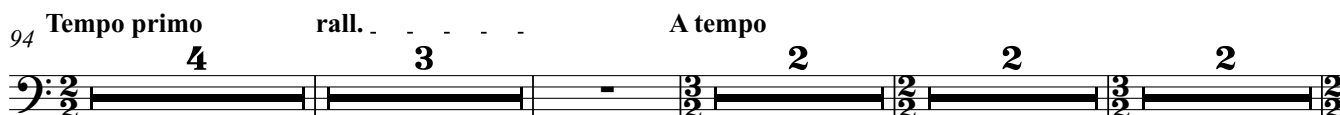


94

Tempo primo

rall.

A tempo



108



9 789892 624594



PARCEIRO INSTITUCIONAL



REPÚBLICA
PORTUGUESA

CULTURA

1 2



9 0



IMPRESA DA
UNIVERSIDADE
DE COIMBRA
COIMBRA UNIVERSITY PRESS